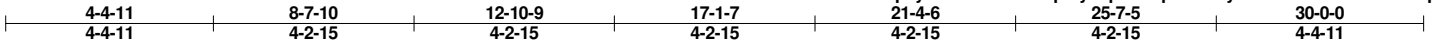


Job 1206034	Truss 01	Truss Type FLOOR	Qty 42	Ply 1	Job Reference (optional)
----------------	-------------	---------------------	-----------	----------	--------------------------

W W Truss Company, Ormond Beach, Florida, Audrey

7.340 s Mar 28 2012 MiTek Industries, Inc. Wed Jun 13 16:28:04 2012 Page 1
ID:cLIXufdRCp5yPnAUUeu9cz7Pp5-yGquRrAqEYnlvCy28ot?V3IZ16aXJNfMmlqLQTz6fKf



Scale = 1:48.8

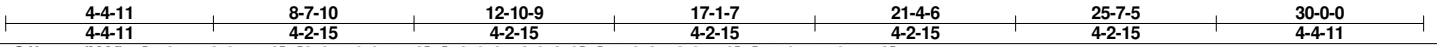
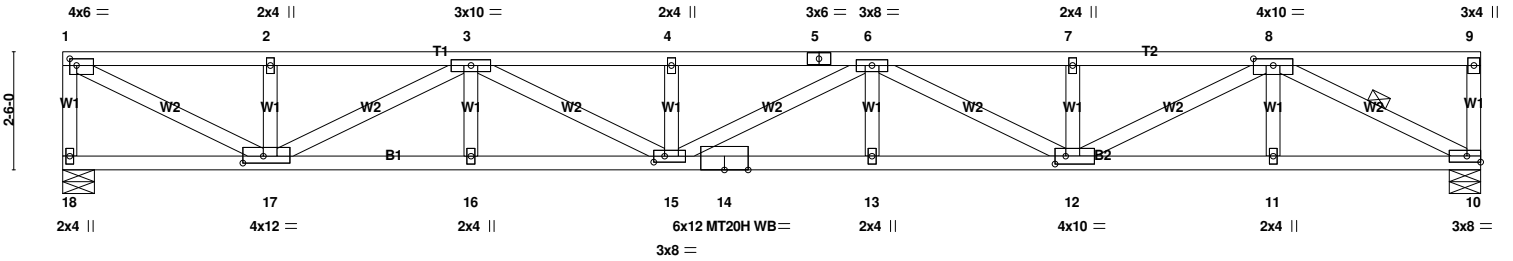


Plate Offsets (X,Y): [1:0-1-12,0-1-12], [8:0-5-0,0-1-12], [12:0-2-12,0-2-0], [15:0-2-12,0-1-8], [17:0-5-4,0-1-12]

LOADING (psf)	SPACING	2-0-0	CSI	DEFL	in (loc)	I/defl	L/d	PLATES	GRIP
TCLL 40.0	Plates Increase	1.00	TC 0.36	Vert(LL)	-0.49 13-15	>729	360	MT20	244/190
TCDL 10.0	Lumber Increase	1.00	BC 0.63	Vert(TL)	-0.77 13-15	>465	240	MT20H	187/143
BCLL 0.0	Rep Stress Incr	YES	WB 0.89	Horz(TL)	0.15 10	n/a	n/a		
BCDL 5.0	Code	FRC2010/TPI2007	(Matrix)						Weight: 158 lb FT = 20%

LUMBER
TOP CHORD 2x4 SYP DSS
BOT CHORD 2x4 SYP DSS
WEBS 2x4 SP No.2

BRACING
TOP CHORD Structural wood sheathing directly applied or 2-8-7 oc purlins, except end verticals.
BOT CHORD Rigid ceiling directly applied or 10-0-0 oc bracing.
WEBS 1 Row at midpt 8-10

MiTek recommends that Stabilizers and required cross bracing be installed during truss erection, in accordance with Stabilizer Installation guide.

REACTIONS (lb/size) 18=1634/0-8-0 (min. 0-1-10), 10=1634/0-8-0 (min. 0-1-10)

FORCES (lb) - Max. Comp./Max. Ten. - All forces 250 (lb) or less except when shown.
TOP CHORD 1-18=-1599/0, 1-2=-2747/0, 2-3=-2747/0, 3-4=-5420/0, 4-5=-5420/0, 5-6=-5420/0, 6-7=-4526/0, 7-8=-4526/0
BOT CHORD 16-17=0/4529, 15-16=0/4529, 14-15=0/5422, 13-14=0/5422, 12-13=0/5422, 11-12=0/2750, 10-11=0/2750
WEBS 1-17=0/3039, 2-17=-448/0, 3-17=-2009/0, 3-15=0/1004, 4-15=-422/0, 6-12=-1010/0, 7-12=-414/0, 8-12=0/2002, 8-10=-3045/0

NOTES
1) All plates are MT20 plates unless otherwise indicated.
2) The Fabrication Tolerance at joint 5 = 20%, joint 14 = 20%
3) "Semi-rigid pitchbreaks with fixed heels" Member end fixity model was used in the analysis and design of this truss.
4) Required 2x6 strongbacks, on edge, spaced at 10-0-0 oc and fastened to each truss with 3-10d (0.131" X 3") nails. Strongbacks to be attached to walls at their outer ends or restrained by other means.

LOAD CASE(S) Standard